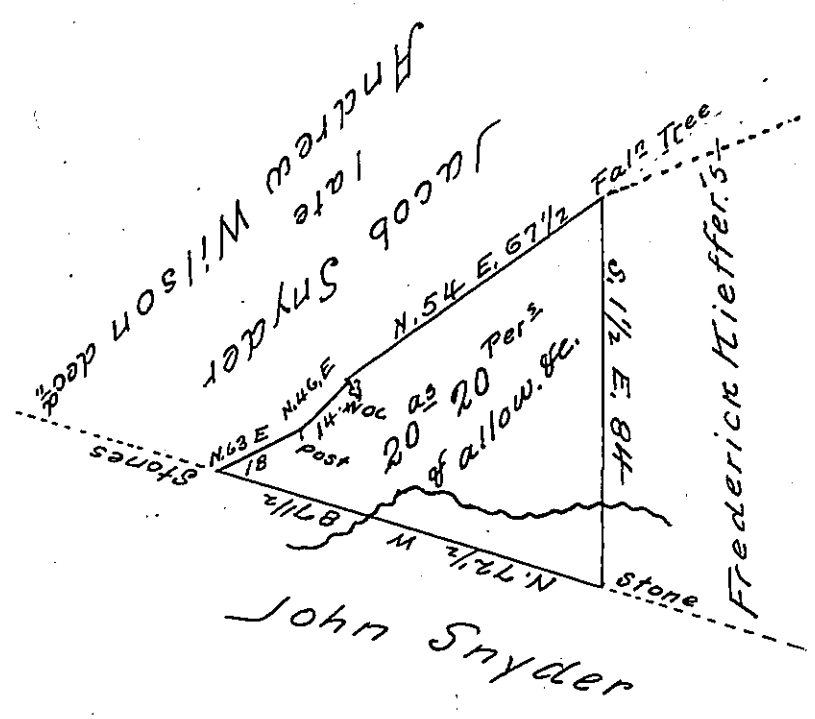


SEE ALSO  
B-4-82



The above small described tract of land situate part in Lebanon, and part in Dauphin County containing twenty acres & twenty perches & allowance &c. which by Warrant dated the 8<sup>th</sup> day of June 1749 was granted to Elizabeth & Thomas McCormick. Surveyed the 6<sup>th</sup> day of April 1829 by the request of Fred<sup>l</sup> Kieffer one of the Executors of Andrew Kieffer dec<sup>d</sup>. For the use of Sarah Kieffer daughter of the said Andrew Kieffer Dec<sup>d</sup>.

Tob<sup>s</sup> Kreider Jr  
Deputy Surveyor

IN TESTIMONY that the above is a copy of the original remaining on file in the Department of Internal Affairs of Pennsylvania, made conformably to an Act of Assembly approved the 16th day of February, 1833, I have hereunto set my Hand and caused the Seal of said Department to be affixed at Harrisburg, this ninth day of February 1906

*Isaac R. Brown*  
Secretary of Internal Affairs.